

Regulatory Compliance and Important Safety Information

Regulatory Certification/Approval Marks for your device can be found in Settings > About Kobo Sage

EU Declaration of Conformity



Български [Bulgarian] Rakuten Kobo Inc. декларира, че този оборудване е в съответствие със съществените изисквания и другите приложими правила на Директива 2014/53/ЕС.

Hrvatski [Croatian] Rakuten Kobo Inc izjavljuje da je ova oprema u skladu s bitnim zahtjevima i drugim relevantnim propisima Direktive 2014/53/EZ.

Česky [Czech] Rakuten Kobo Inc tímto prohlašuje, že tento zařizení je ve shodě se základními požadavky a dalšími příslušnými ustanoveními směrnice 2014/53/ES.

Dansk [Danish] Rakuten Kobo Inc erklærer herved, at følgende udstyr overholder de væsentlige krav og øvrige relevante krav i direktiv 2014/53/EF.

Deutsch [German] Rakuten Kobo Inc, erklärt dieses Gerät entspricht den grundlegenden Anforderungen und den weiteren entsprechenden Vorgaben der Richtlinie 2014/53/EU.

Eesti [Estonian] Rakuten Kobo Inc deklareerib seadme seadme vastavust direktiivi 2014/53/EÜ põhinõuetele ja nimetatud direktiivist tulenevatele teistele asjakohastele sätetele.

English Rakuten Kobo Inc declares that this equipment is in compliance with the essential requirements and other relevant provisions of Directive 2014/53/EC.

Español [Spanish] Rakuten Kobo Inc declara que el equipo cumple con los requisitos esenciales y cualesquiera otras disposiciones aplicables o exigibles de la Directiva 2014/53/CE.

Ελληνική [Greek] Rakuten Kobo Inc ΔΗΛΩΝΕΙ ΟΤΙ ΕΞΟΠΛΙΣΜΟΣ ΣΥΜΜΟΡΦΩΝΕΤΑΙ ΠΡΟΣ ΤΙΣ ΟΥΣΙΩΔΕΙΣ ΑΠΑΙΤΗΣΕΙΣ ΚΑΙ ΤΙΣ ΛΟΙΠΕΣ ΣΧΕΤΙΚΕΣ ΔΙΑΤΑΞΕΙΣ ΤΗΣ ΟΔΗΓΙΑΣ 2014/53/EK.

Français [French] Rakuten Kobo Inc déclare que l'appareil est conforme aux exigences essentielles et aux autres dispositions pertinentes de la directive 2014/53/CE.

Irish [Irish] Rakuten Kobo Inc declares that this equipment is in compliance with the essential requirements and other relevant provisions of Directive 2014/53/EC.

Italiano [Italian] Rakuten Kobo Inc dichiara che questo apparecchio è conforme ai requisiti essenziali ed alle altre disposizioni pertinenti stabilite dalla direttiva 2014/53/CE.

Latviski [Latvian] Rakuten Kobo Inc deklarē, ka iekārta atbilst būtiskajām prasībām un citiem ar to saistītajiem noteikumiem Direktīvas 2014/53/EK.

Lietuvių [Lithuanian] Rakuten Kobo Inc deklaruoja, kad šis įranga atitinka esminius reikalavimus ir kitas 2014/53/EB Direktyvos nuostatas.

Nederlands [Dutch] Rakuten Kobo Inc dat het toestel toestel in overeenstemming is met de essentiële eisen en de andere relevante bepalingen van richtlijn 2014/53/EG.

Malti [Maltese] Rakuten Kobo Inc jiddikjara li dan prodott jikkonforma mal-ħtiġijiet essenzjali u ma provvedimenti oħrajn relevanti li hemm fid-Dirrettiva 2014/53/EC.

Magyar [Hungarian] Rakuten Kobo Inc nyilatkozik, hogy a berendezés megfelel a vonatkozó alapvető követelményeknek és az 2014/53/EC irányelv egyéb előírásainak.

Polski [Polish] Rakuten Kobo Inc oświadcza, że wyrobu jest zgodny z zasadniczymi wymogami oraz pozostałymi stosownymi postanowieniami Dyrektywy 2014/53/EC.

Português [Portuguese] Rakuten Kobo Inc declara que este equipamento está conforme com os requisitos essenciais e outras disposições da Directiva 2014/53/CE.

Româna [Romanian] Rakuten Kobo Inc declară că acest echipament este în conformitate cu cerințele esențiale și cu celelalte prevederi relevante ale Directivei 2014/53/CE.

Slovensko [Slovenian] Rakuten Kobo Inc izjavlja, da je ta opreme v skladu z bistvenimi zahtevami in ostalimi relevantnimi določili direktive 2014/53/ES.

Slovensky [Slovak] Rakuten Kobo Inc týmto vyhlasuje, že zariadenia spĺňa základné požiadavky a všetky príslušné ustanovenia Smernice 2014/53/ES.

Suomi [Finnish] Rakuten Kobo Inc vakuuttaa täten että laitteet on direktiivin 2014/53/EY oleellisten vaatimusten ja sitä koskevien direktiivin muiden ehtojen mukainen.

Svenska [Swedish] Rakuten Kobo Inc förklarar att denna utrustningstyp står i överensstämmelse med de väsentliga egenskapskrav och övriga relevanta bestämmelser som framgår av direktiv 2014/53/EG.

Norske [Norway] Rakuten Kobo Inc erklærer at dette utstyret er i samsvar med de nødvendige kravene og andre relevante bestemmelser i direktiv 2014/53/EF.

Note: Refer to the Declaration of Conformity (DoC) for any additional regulatory compliance information. To obtain the DoC for this device, please visit www.kobo.com/userguides

Europe - Recycling Information



In accordance with the European Union's directive (2012/19/EU) on the Waste of Electrical and Electronic Equipment (WEEE), this symbol on the product or on its packaging indicates that this product must not be disposed of with your other household waste. Instead, it is your responsibility to dispose of your waste equipment by handing it over to a designated collection point for the recycling of waste electrical and electronic equipment. The separate collection and recycling of your waste equipment at the time of disposal will help to conserve natural resources and ensure that it is recycled in a manner that protects human health and the environment. For more information about where you can drop off your waste equipment for recycling, please contact your local city office, your household waste disposal service or the shop where you purchased the product.

Not all jurisdictions have appropriate infrastructure for electronics to be separately collected and treated. Please contact your local waste authority for how you should dispose of your device.

For further information on how you can recycle your device, please contact Kobo at: <http://www.kobo.com/erecycling>

Manufacturer information:

Rakuten Kobo Inc.
135 LIBERTY ST. SUITE 101 TORONTO ON M6K 1A7 CANADA

SAR Limits

This device has been tested and meets applicable limits for Radio Frequency (RF) exposure.

The frequency and maximum transmitted power in EU are listed as bellows:

- 2412 - 2472 MHz: 19.99dBm

Transfer Rate:	802.11b: up to 11 Mbps
	802.11g: up to 54 Mbps
	802.11n: up to 72.2 Mbps
	802.11ac: up to 433.3 Mbps

The exposure standards for wireless devices employ a unit of measurement known as the Specific Absorption Rate, or SAR. The SAR limit set by the FCC/IC is 1.6 W/kg. The SAR limit recommended by the Council of the European Union is 2.0 W/kg. This device's

maximum SAR value is well below the FCC/IC and EU limits with specific measurements shown in the below table.

Device Model	FCC/IC 1g SAR Limit	Highest Reported Body SAR Value
N778K	1.6	1.03
Device Model	EU 10g SAR Limit	Highest Reported Body (0 cm Gap) Value
N778K	2.0	0.99
Device Model	ACMA 10g SAR Limit	Highest Reported Body (0 cm Gap) Value
N778K	2.0	1.47

USA - Appliance Efficiency Compliance



This device has been tested and found to comply with the California Code of Regulations, Title 20, Sections 1601 through 1609 with the applicable test standard - Appendix Y to Subpart B of Part 430.

USA - FCC Compliance Statement



Kobo Sage (Model N778K) FCC ID: NOIKBN778K

This device complies with Part 15 of the FCC Rules. Operation is subject to the following two conditions: (1) This device may not cause harmful interference, and (2) this device must accept any interference received, including interference that may cause undesired operation.

This equipment has been tested and found to comply with the limits for a Class B digital device, pursuant to Part 15 of the FCC Rules. These limits are designed to provide reasonable protection against harmful interference in a residential installation. This equipment generates, uses and can radiate radio frequency energy and, if not installed and used in accordance with the instructions, may cause harmful interference to radio communications. However, there is no guarantee that interference will not occur in a particular installation. If this equipment does cause harmful interference to radio or television reception, which can be determined by turning the equipment off and on, the user is encouraged to try to correct the interference by one of the following measures:

- Reorient or relocate the receiving antenna.
- Increase the separation between the equipment and receiver.

- Connect the equipment into an outlet on a circuit different from that to which the receiver is connected.
- Consult the dealer or an experienced radio/TV technician for help.

Important: Changes or modifications to this product not authorized by Kobo could void the EMC and wireless compliance and negate your authority to operate the product. This product has demonstrated EMC compliance under conditions that included the use of compliant peripheral devices and shielded cables between system components. It is important that you use compliant peripheral devices and shielded cables between system components to reduce the possibility of causing interference to radios, televisions, and other electronic devices.

FCC Caution: Any changes or modifications not expressly approved by the party responsible for compliance could void the user's authority to operate this equipment.

This transmitter must not be co-located or operating in conjunction with any other antenna or transmitter.

Canada - Industry Canada (IC) Compliance Statement

Kobo Sage (Model N778K) IC: 8857A-KBN778K

CAN ICES-003 (B)/NMB-003 (B)

Industry Canada statement:

This device complies with ISED's licence-exempt RSSs. Operation is subject to the following two conditions: (1) This device may not cause harmful interference, and (2) this device must accept any interference received, including interference that may cause undesired operation.

Le présent appareil est conforme aux CNR d'ISED applicables aux appareils radio exempts de licence. L'exploitation est autorisée aux deux conditions suivantes : (1) le dispositif ne doit pas produire de brouillage préjudiciable, et (2) ce dispositif doit accepter tout brouillage reçu, y compris un brouillage susceptible de provoquer un fonctionnement indésirable.

Caution :

(i) the device for operation in the band 5150-5250 MHz is only for indoor use to reduce the potential for harmful interference to co-channel mobile satellite systems; (ii) Users should also be advised that high-power radars are allocated as primary users (i.e. priority users) of the bands 5650-5850 MHz and that these radars could cause interference and/or damage to LE-LAN devices.

Avertissement:

(i) les dispositifs fonctionnant dans la bande 5150-5250 MHz sont réservés uniquement pour une utilisation à l'intérieur afin de réduire les risques de brouillage préjudiciable aux systèmes de satellites mobiles utilisant les mêmes canaux; (ii) De plus, les utilisateurs devraient aussi être avisés que les utilisateurs de radars de haute puissance sont

désignés utilisateurs principaux (c.-à-d., qu'ils ont la priorité) pour les bandes 5650-5850 MHz et que ces radars pourraient causer du brouillage et/ou des dommages aux dispositifs LAN-EL.

USA and Canada - Radiation Exposure Statement (for portable wireless device use)

This device complies with portable RF exposure limit in Canada and the USA set forth for an uncontrolled environment and is safe for intended operation as described in this manual. Further RF exposure reduction can be achieved if the product can be kept as far as possible from the user body or set the device to lower output power if such function is available.

Déclaration d'exposition aux radiations :

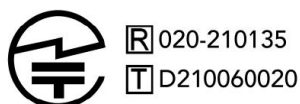
Le produit est conforme aux limites d'exposition pour les appareils portables RF pour les Etats-Unis et le Canada établies pour un environnement non contrôlé. Le produit est sûr pour un fonctionnement tel que décrit dans ce manuel. La réduction aux expositions RF peut être augmentée si l'appareil peut être conservé aussi loin que possible du corps de l'utilisateur ou que le dispositif est réglé sur la puissance de sortie la plus faible si une telle fonction est disponible.

Note: The country code selection is for non-US model only and is not available to all US model. Per FCC regulation, all WiFi product marketed in US must be fixed to US operation channels only.

Natural Resources Canada (NRCAN)



Japan - JATE and TELEC



This device complies with the Technical Regulations Conformity Certification of Terminal equipment and Specified Radio equipment.

Japan Class B ITE



This is a Class B product based on the standard of the Voluntary Control Council for Interference from Information Technology Equipment (VCCI). If this is used near a radio or television receiver in a domestic environment, it may cause radio interference. Install and use the equipment according to the instruction manual.

この装置は、クラスB情報技術装置です。この装置は、家庭環境で使用することを目的としていますが、この装置がラジオやテレビジョン受信機に近接して使用されると、受信障害を引き起こすことがあります。

取扱説明書に従って正しい取り扱いをして下さい。 VCCI-B

Australia and New Zealand - EMC

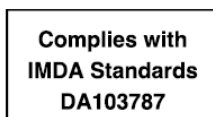


This device complies with the requirements of the electrical and EMC regulations of Australia and New Zealand in accordance with AS/NZS 4417 Parts 1, 2, 3, and 4.

United Kingdom



Singapore



China

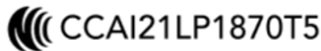
CMIIT ID: 2022AJ0382 • Supplier 供應商：振曜科技股份有限公司



Turkey - RoHS Compliance Statement

Republic of Turkey: EEE Compliance Regulations

國家通信委員會- NCC



國家通信委員會- NCC

低功率電波輻射性電機管理辦法

第十二條 經型式認證合格之低功率射頻電機，非經許可，公司、商號或使用者均不得擅自變更頻率、加大功率或變更原設計之特性及功能。

第十四條 低功率射頻電機之使用不得影響飛航安全及干擾合法通信；經發現有干擾現象時，應立即停用，並改善至無干擾時方得繼續使用。前項合法通信，指依電信法規定作業之無線電通信。低功率射頻電機須忍受合法通信或工業、科學及醫療用電波輻射性電機設備之干擾。

電信管制射頻器材警語：

法源依據

低功率射頻器材技術規範 3.8.2 (109 年7 月1 日)規定，應於旨揭器材中文使用說明書內加印同辦法之規定內容。

[警語內容]

取得審驗證明之低功率射頻器材，非經核准，公司、商號或使用者均不得擅自變更頻率、加大功率或變更原設計之特性及功能。

低功率射頻器材之使用不得影響飛航安全及干擾合法通信；經發現有干擾現象時，應立即停用，並改善至無干擾時方得繼續使用。前述合法通信，指依電信管理法規定作業之無線電通信。低功率射頻器材須忍受合法通信或工業、科學及醫療用電波輻射性電機設備之干擾。

使用此產品時應避免影響附近雷達系統之操作。

此外，因電子筆記本屬於3C產品，因此使用時請注意下列事項：

(1)警語(於產品本體、說明書及外包裝標示)：使用過度恐傷害視力。

(2)注意事項(於產品說明書及外包裝標示)：

a、使用30分鐘請休息10分鐘。

b、2歲以下幼兒不看螢幕，2歲以上每天看螢幕不要超過1小時。

本產品電池是內建式電池，若有更換電池的需求，煩請聯絡製造商，交給製造商協助更換並妥善處理使用過之電池

Other Safety Information

1. The RF signals generated by your device can cause interference with or malfunction to medical devices such as pacemakers or hearing aids, including the potential for serious injury. If you have any concerns about using your Kobo device in proximity to any medical devices, please consult the manufacturer of the medical device in question.

2. Certain locations, such as health care facilities or construction sites, may be put at risk when radio frequency (RF) signals are generated, including through use of the wireless functionality on your device. If you see signs and other material requesting that two-way radios or cellular phones should be turned off, please turn off the wireless connection of your device in these areas.
3. This Kobo device has been tested to comply with specific absorption rate (SAR) limits as a body worn device. The maximum allowable level for the European Union is 2.0 W/kg and operation of this device is below that value. To reduce RF exposure, keep your device at a separation distance of 0mm from your body, especially when transmitting wireless data. Cases with metal parts may change the RF performance of the device, including its compliance with RF exposure guidelines, in a manner that has not been tested or certified.
4. Do not open or attempt to repair your device, including repair or replacement of the lithium-ion battery in this device; contact Kobo Support for any repair and/or battery-related safety concerns.
5. It is recommended to only use Kobo adapters or chargers that are specifically designed or approved for your Kobo device. Do not use your adapter if the cord or plug is damaged.
6. Avoid exposing your device to fire and other direct heat, including hair dryers, microwave ovens and other appliances.
7. As this device contains small components that could lead to a choking hazard for small children, Kobo recommends that you do not open the device for any reason, including repair.
8. Avoid storing your device in temperatures lower than -10 °C and higher than 60 °C (14 °F to 140 °F). Operation of the device should occur in temperatures between 0 °C and 45 °C (32 °F to 113 °F). Dramatic changes in temperature or humidity may affect the functioning of the device due to the formation of condensation.
9. Do not force objects into your device ports (USB port), connections or buttons. If a connector does not easily fit, then it may not be a match for this device.
10. Do not operate the device when driving and do not store your device in a location that is covering an airbag location. Airbags erupt with incredible force and could cause injury or damage if your device or its accessories are in the path of the expected airbag's inflation area.
11. During travel on an airplane, follow all instructions provided by your flight operator. Your Kobo device wireless "Wi-Fi" on/off function available in your device settings.
12. Some individuals may be susceptible to seizures, blackouts, and eyestrain when operating devices with flashing lights or similar light patterns. If you have experienced any of these symptoms or you have any concerns about this issue, please consult a physician. It should be noted that this may occur even if you have not had a prior occurrence.
13. Kobo Sleep Covers contain magnets. Magnets may impact the functioning of medical devices such as pacemakers or defibrillators. Contact your medical device manufacturer if you have any concerns.